

THANK YOU
to our generous sponsors

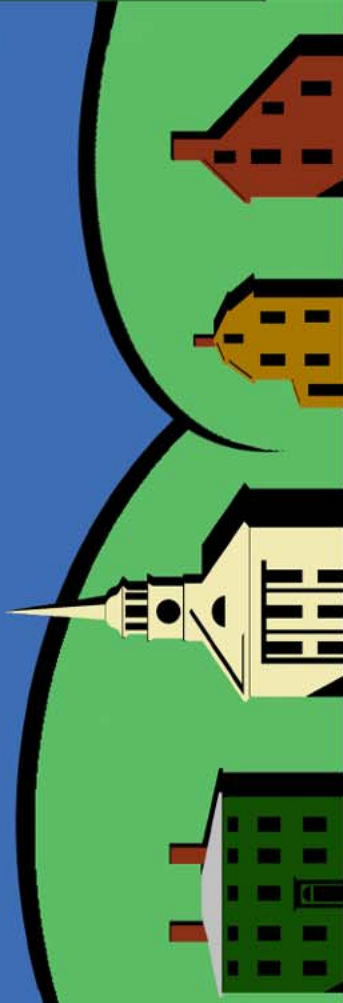


This program is supported in part by grants from the Medford, Malden, Melrose and Stoneham Cultural Councils.



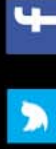
Tufts
UNIVERSITY

Special thanks to the Medford, Malden, Melrose and Stoneham Public Libraries for their collaboration. Additional thanks to the Friends of the Middlesex Fells Reservation, The Mystic River Watershed Association, Freedoms Way National Heritage Area, Northeast Chapter of The Society for Preservation of Old Mills and Society of Industrial Archaeology.



The Preservation Collaborative, Inc.
www.preservation-collaborative.com

40 Sheridan Avenue
Medford, Massachusetts 02155

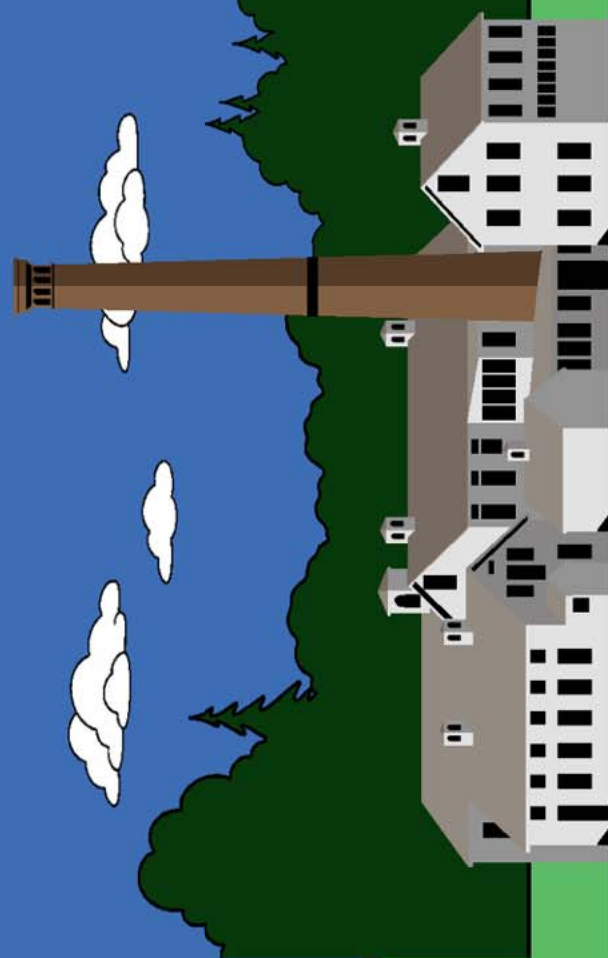


Find us on:



INDUSTRIAL EDEN:
The Legacy of Haywardville

*2014 Program Guide and
Walking Tour Book*



**Birthplace of Rubber, Converse Shoes and your
Middlesex Fells. Come experience history!**
www.preservation-collaborative.com/haywardville



What was Haywardville?

Haywardville was a mill village located in Stoneham on the border of Melrose, Malden and Medford. Straddling Spot Pond Brook, the village was the site of early industrial development which later blossomed into larger factories. The best known was the rubber-works which is pictured above.



Where is the site?

The now vanished village was located within the Middlesex Fells Reservation. It is roughly bound by Woodland and Ravine Roads, Fellsway East and Pond Street. You can walk along many of the old cart paths today. See the map for more information.



Why is it important?

Haywardville is important for its industrial development and notable firsts. The site was home to a dozen small mills, born from necessity and flourishing during the Industrial Revolution. The rubber-works was where Nathaniel Hayward developed part of the vulcanization process. Prior to that, it was home to Elisha Converse who invented the original Converse Shoes.



What Remains?

Following acquisition of the site by the Commonwealth of Massachusetts, all buildings were relocated to Ravine Terrace and Brook Street. The remaining landscape was restored by Charles Eliot, a noted protégé of Frederick Law Olmstead. This site was instrumental in the creation of the larger Metropolitan Park System, the first in the nation.



What is it now?

Haywardville today is a hidden jewel within the Middlesex Fells Reservation. Meandering trails, stone walls, foundations and the mill ponds were left in place to contribute to the site's natural beauty. It is home to one of the largest stands of White Pine and Hemlock trees north of Boston.

2014 Program Schedule

May:

Along the Ravine: A Walking Tour of Haywardville

Saturday, May 3, 2014, 10 A.M.

Rain date – Saturday, May 10, 2014.

Sponsored by the Stoneham Public Library

Location: Meet at Pond Street Parking Area, Fells Reservation

This walking tour highlights the evolution of the site's numerous mills from the seventeenth through nineteenth centuries. We will explore how the waterpower was used, what life was like in the village and how goods produced were shipped around the world. Approximately 90 minutes and will feature historic photos and building recreations.

Hidden History: Exploring Changing Urban Landscapes

Thursday, May 22, 2014, 7 P.M.

Sponsored by Freedoms Way Nat'l Heritage Area

Location: Malden Public Library

Four centuries deep, the landscape we live in today is packed with subtle clues. By reading these signs, the truth can be separated from legend for a clear understanding of a landscape's history. Join us for a virtual exploration of two historic neighborhoods in Medford and Malden.

June:

Spirit of Invention: What a Great Idea!

Wednesday, June 11, 2014, 7 P.M.

Sponsored by the Melrose Public Library

Location: Melrose Public Library

Besides Converse, some local inventors such as D.E. Bennett designed rubber products. Rubber shoes, tires and accessories made life easier. Other bright minds focused on improving guitars and ice cream freezers. Melrose was in love with new technology!

Working Together in Stoneham: The Daring Success of Co-ops

Tuesday, June 17, 2014, 7 P.M.

Sponsored by the Stoneham Public Library

Location: Stoneham Public Library

Stoneham people pursued a great concept – share work, share profits, succeed. The village of Haywardville was a prime example. The larger community adapted the model as a pattern for some factories and a bank. Social groups learned how to empower their members. Co-operation worked!

History Uncovered: Discovering the Malden River's Rich Past

Saturday, June 21, 2014, 10 A.M.

Sponsored by the Mystic River Watershed Association

Location: Rivers Edge Park

For thousands of years, the Malden River wove its way from the Middlesex Fells to the Mystic River, traveling through three towns along the way. After the nineteenth century, however, much of this waterway was hidden by culverts and industry. Join us as we uncover the past, present and future life of this newly rediscovered waterway.

July:

North Medford: A Summer Getaway

Wednesday, July 9, 2014, 7 P.M.

Sponsored by the Medford Public Library

Location: Medford Public Library

Tucked amid the rocky outcroppings next to the Middlesex Fells, North Medford was a trolley ride from the city's heat. Fresh air, Wright's Pond, trees and more trees – this was a delightful respite for day trippers followed then by hardworking commuters looking to purchase land.

A Landscape Changed: Evolution of Land Use in the Middlesex Fells Reservation

Wednesday, July 23, 2014, 7 P.M.

Sponsored by the Medford Public Library

Location: Medford Public Library

For two and a half centuries the Middlesex Fells was a part of the evolving New England landscape. Generations worked farms, fields and forest. Almost a dozen home grown industries vanished when properties were seized by eminent domain. Come revisit the thriving enterprises that changed surrounding towns and impacted the world.

August:

Over, Under and In: Using Waterpower along Spot Pond Brook

Wednesday, August 13, 2014, 7 P.M.

Sponsored by the Melrose Public Library

Location: Melrose Public Library

Water quenched human thirst, beautified land and powered mills machinery for hundred of years. It was the lifeblood of the regional economy and it was here that the real Industrial Revolution began. Join us for an exploration of the story of Spot Pond Brook as it was altered and improved to suite the industrial community's needs of Hayardville, Melrose and Malden.

September:

A Landscape Changed: Evolution of Land Use in the Middlesex Fells Reservation

Wednesday, September 17, 2014

Sponsored by the Friends of the Middlesex Fells

Location: Botume House, Stoneham

For two and a half centuries the Middlesex Fells was a part of the evolving New England landscape. Generations worked farms, fields and forest. Almost a dozen home grown industries vanished when properties were seized by eminent domain. Come revisit the thriving enterprises that changed surrounding towns and impacted the world.

October:

Working Animals: The 'Invisible' Labor Force

Tuesday, October 21, 2014

Sponsored by the Malden Public Library

Location: Malden Public Library

Working animals helped to build communities, haul goods and provide transportation. Fire horses protected homes and businesses. Join us for an appreciation of these unsung heroes of Malden and nearby cities.

Along the Ravine: A Walking Tour of Haywardville

Saturday, October 11, 2014

Rain date – Saturday, October 18, 2014.

Sponsored by the Stoneham Public Library

Location: Meet at Pond Street Parking Area, Fells Reservation

This walking tour highlights the evolution of the site's numerous mills from the seventeenth through nineteenth centuries. We will explore how the waterpower was used, what life was like in the village and how goods produced were shipped around the world. Approximately 90 minutes and will feature historic photos and building recreations.

November:

Over, Under and In: Using Waterpower along Spot Pond Brook

Thursday, November 14, 2014

Sponsored by the Malden Public Library

Location: Malden Public Library

Water quenched human thirst, beautified land and powered mills machinery for hundred of years. It was the lifeblood of the regional economy and it was here that the real Industrial Revolution began. Join us for an exploration of the story of Spot Pond Brook as it was altered and improved to suite the industrial community's needs of Hayardville, Melrose and Malden.

Event Locations:

Note: All programs are free and open to the public thanks to the generosity of our sponsors.

Stoneham Public Library: 431 Main Street, Stoneham MA 02180

Medford Public Library: 111 High Street, Medford MA 02155

Malden Public Library: 36 Salem Street, Malden MA 02148

Melrose Public Library: 69 W. Emerson Street, Melrose MA 02176

Botume House: 4 Woodland Road, Stoneham

Pond Street Parking Area, Middlesex Fells Reservation: Halfway between Woodland Road and Fellsway East/West Wyoming Avenue. Alternative parking at Jerry Jingle Park or Crystal Springs Parking Area.

River's Edge Park: 200 River's Edge Drive, Medford, MA 02155. Look for the small designated parking area.

Graphic Design:

This brochure was designed and produced by The Preservation Collaborative, Inc. and The Historic Connection.

© 2014, all rights reserved.